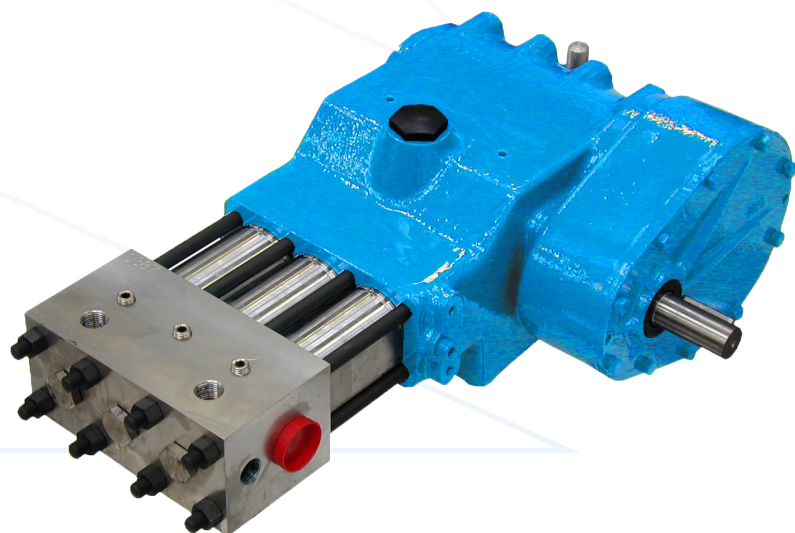




High & Ultra High Pressure Technology

HP40 Pump



Maximum Power

40HP

30kW



Maximum Pressure

1000bar
at 16lpm

14,500psi at 4.3gpm



Maximum Flowrate

103lpm
at 160bar

27.2gpm at 2,320psi

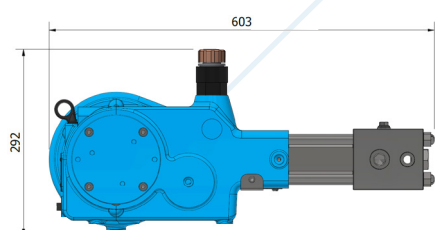


Features

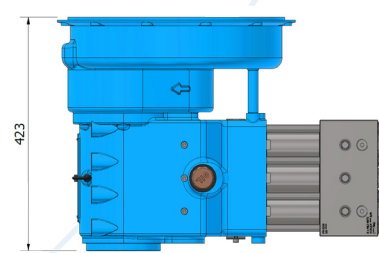
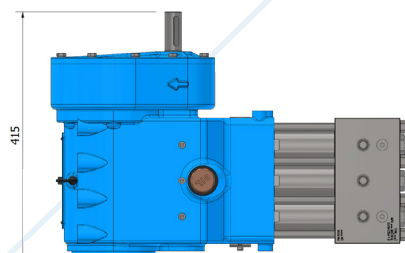
- 431 stainless steel pump head
- Solid ceramic/hard coated stainless-steel plungers & self adjusting seals
- In-line valve arrangement for maximum efficiency & prevents the adverse effects of cyclic stress in the pumphead.
- Interchangeable plunger kits
- Hardened, alloy steel crankshaft with heavy duty roller main bearings
- SG iron crankcase with splash lubrication
- Forged connecting rods with low friction, shell type big end bearings and lead bronze lined small end bushes
- Gear driven, eliminating the need for belt drive
- Pressure Gauge
- Safety valve or burst disc
- Outstanding seal, plunger & valve life

Options

- 316 stainless steel pump head for seawater applications
- Choice of gear ratio to suit diesel engine or electric motor drive
- SAE adaptor housing (SAE 3,4 or 5) for flange mounting the pump to a diesel engine flywheel housing ensuring extremely compact, perfectly aligned installations & enclosing all moving parts
- Bareshaft pump only or complete unit build
- ATEX compliant



Approx. weight
105kg (231lbs)



Approx. weight inc optional SAE housing
115kg (253lbs)

HP40 Pump

Plunger Diameter mm	Gear Ratio Input speed(rpm)			Pump Speed rpm	Power Required		Flow rate		Max Pressure	
	1500	1800	2200		kW	HP	lpm	usgpm	bar	psi
14	2.83			530	20	27	11	2.9	1000	14,500
		2.83		636	25	33	13	3.5		
	2.28			658	25	34	14	3.6		
			2.83	742	29	38	15	4.1		
	1.92			781	30	40	16	4.3		
		2.28		789	30	41	16	4.3		
18	2.83			530	20	27	18	4.8	600	8,700
		2.83		636	24	33	22	5.8		
	2.28			658	25	34	23	6.0		
			2.83	742	28	38	25	6.8		
	1.92			781	30	40	27	7.1		
		2.28		789	30	41	27	7.2		
22	2.83			530	20	27	27	7.2	400	5,800
		2.83		636	24	32	33	8.7		
	2.28			658	25	34	34	8.9		
			2.83	742	28	38	38	10.1		
	1.92			781	30	40	40	10.6		
		2.28		789	30	41	41	10.7		
25	2.83			530	20	27	35	9.3	310	4,495
		2.83		636	24	33	42	11.2		
	2.28			658	25	34	44	11.6		
			2.83	742	28	38	49	13.0		
	1.92			781	30	40	52	13.7		
		2.28		789	30	40	52	13.9		
30	2.83			530	21	28	51	13.4	220	3,190
		2.83		636	25	33	61	16.1		
	2.28			658	26	34	63	16.6		
			2.83	742	29	39	71	18.8		
	1.92			781	30	41	75	19.8		
		2.28		789	31	41	75	20.0		
35	2.83			530	20	27	69	18.2	160	2,320
		2.83		636	25	33	83	21.9		
	2.28			658	25	34	85	22.6		
			2.83	742	29	38	96	25.5		
	1.92			781	30	40	101	26.9		
		2.28		789	30	41	103	27.2		

Notes 1. Flowrates shown are theoretical and will reduce by approximately 7.5% at full pressure. **2.** Pump stroke 45mm
3. Consult Hughes Pumps for required feed conditions **4.** Maximum, intermittent performances are shown.

Hughes Pumps Limited
 Highfield Works, Spring Gardens,
 West Sussex, RH20 3BS
 United Kingdom

Telephone +44 (0) 01903 892358
Email sales@hughes-pumps.co.uk
Web www.hughes-pumps.co.uk



Certification number 4257



Manufactured in the UK since 1970

In line with the company's policy of research and development, alterations in design, dimensions and appearance are incorporated from time to time in order to ensure important developments are included at the earliest opportunity. The Company, therefore, reserves the right to alter design, dimensions etc without notice.